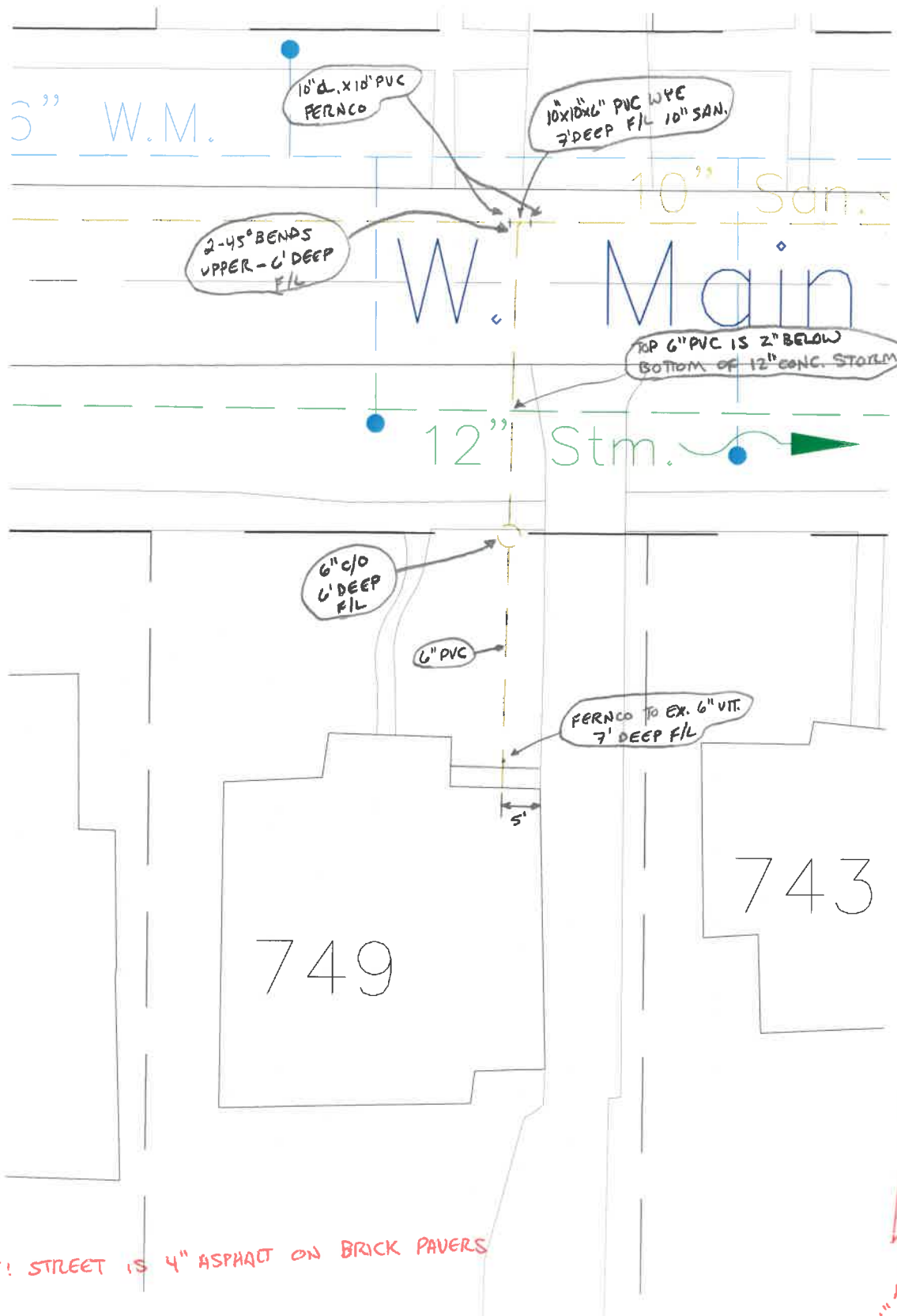


749 WEST MAIN STREET  
SANITARY SEWER

DATE: 8-4-16  
INSTALLED BY: VERNON NAGEL  
INSPECTED BY: MARTY CROSSLAND



10" d. x 10" PVC  
PERNCO

10" x 10" PVC WYE  
7' DEEP FIL 10" SAN.

2-45° BENDS  
UPPER - 6' DEEP  
FIL

TOP 6" PVC IS 2" BELOW  
BOTTOM OF 12" CONC. STORM

6" C/O  
6' DEEP  
FIL

6" PVC

PERNCO TO EX. 6" VIT.  
7' DEEP FIL